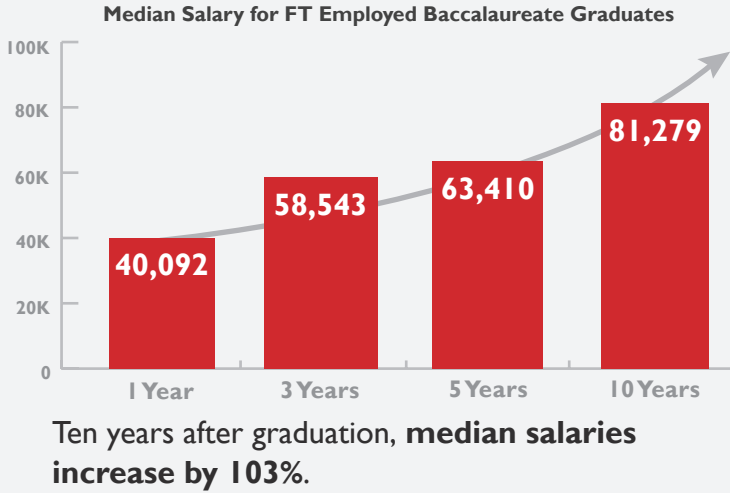
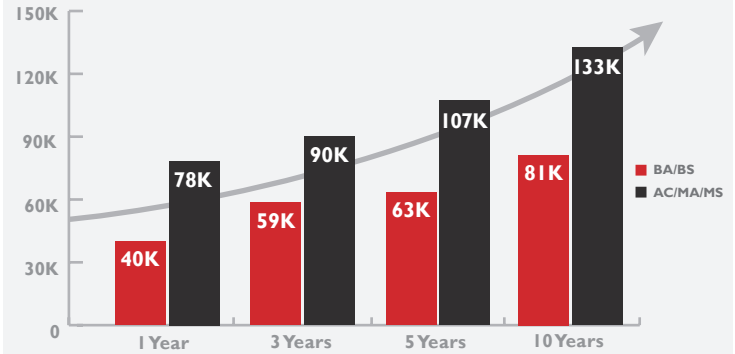


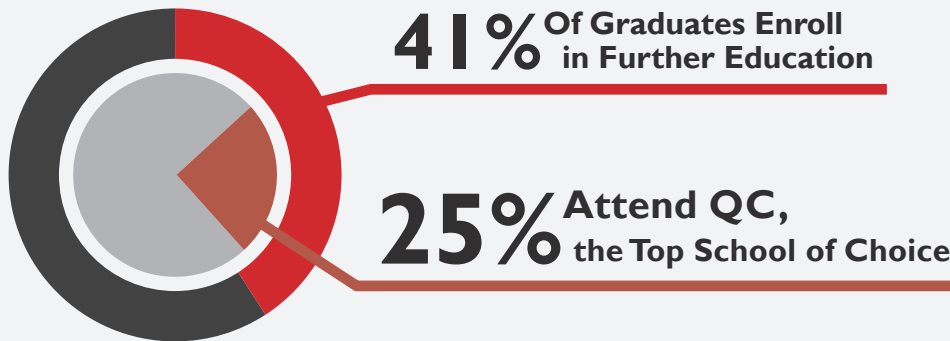
Salary Ten Year Overview for Cohorts of 2002–2021



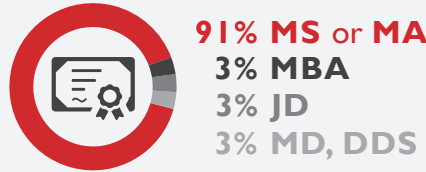
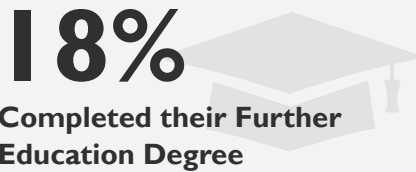
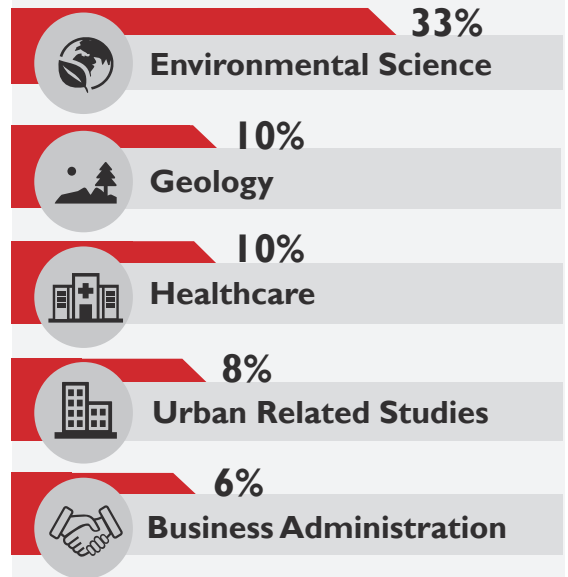
Below is a comparison of **BA/BS vs. AC/MA/MS Median Salaries**. SEES AC/MA/MS graduates earn median salaries 31–52K higher than SEES BA/BS graduates throughout their early careers.



Further Education Overview for Cohorts of 2013–2019



Top Degree Programs Completed



Internships & Certificates Overview for Cohort 2023 w/LinkedIn Profiles



Over 10 unique Internship providers were reported. Some of these providers include:



Top Certificates Skills Reported

MS Applications.....22%